

Brehmer



FERTILIZER EQUIPMENT DRY FERTILIZER TENDERS & FIELD LOADERS

WHAT'S NEW FROM B



15' SIDE DISCHARGE TRUCK BODY

This new shorter truck-mounted tender design performs like the Brehmer Dry Tenders you've come to depend on, but features a new bin design that **holds more cubic footage**. This base model is built with 304 stainless steel and comes with the standard features listed below, but can be customized with a variety of optional add-ons.

COLOR OPTIONS:



Stainless Steel



Brehmer Gray

STANDARD FEATURES:

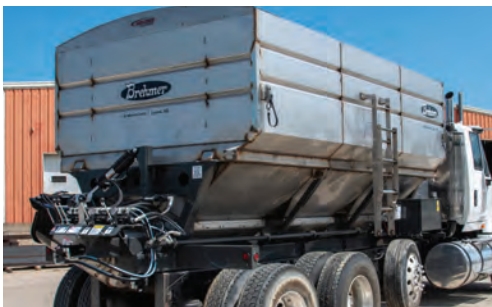
- 600 cu.ft.
- Manual tarp
- Three five-foot bins
- Filled-in tarp bow system
- Reinforced corner gussets
- Unloading capacity of 3500-4000 lbs/min
- Stainless steel auger flighting
- Dual EZ Slide gates on each bin
- Self-locking hydraulic discharge auger
- 10" belly and discharge auger

OPTIONS:

- Stainless steel fenders
- Truck pump
- Channel bumper with break lights
- Upgraded stainless bumper with full light package
- Grease banks
- Light kit
- Electric tarp
- Middle bin split

TENDER SIZE	15'
Travel Height	7'2"
Auger Length	16'7"
Discharge Height - MIN	7'1"
Discharge Height - MAX	14'2"
Auger Reach - SIDE	13'4"
Standard Cubic Feet	600

Discharge height is measured from the top of the existing truck frame.



Same reliable operation as other Brehmer dry tenders.



Shallower hoppers eliminate need for vibrators



New bin design increases capacity

REHMER MFG.

NURSERY TRAILERS

Increase your versatility for liquid fertilizer applications with the **NEW line of Nursery Trailers** from Brehmer Mfg. This 42' Nursery Trailer features front and back platforms with adjustable center support for sump tanks and a moveable pocket ladder that can be positioned at various points along the center platform for easy access.

STANDARD FEATURES:

- Pre-drilled mounting holes for Enduraplas and Ace Tanks
- Adjustable center support for end sump tanks
- Moveable pocket ladder can be mounted at various points on center platform for easy access
- Treated 2x12 Douglas fir decking

TRAILER SIZE	42'	45'
Front Platform	12'	12'
Middle Platform	16'	19'
Back Platform	12'	12'



FERTILIZER TENDERS

At Brehmer, we're proud to be a partner to the agriculture industry. We know the importance of correct fertilizer application and the roll it plays in your operation. That's why we build with quality materials and implement time and cost-saving features. We build each tender box to suite your needs by asking the right questions at the start of a project.

SIDE DISCHARGE

FEATURES:

- Self-Locking Hydraulic Discharge Auger

OPTIONS:

- Split Bins
- Diesel or Wet Kit Available
- Stainless Steel Fenders

COLOR OPTIONS:



Stainless Steel



Brehmer Gray

TRUCK MOUNT



18' Side Discharge Truck Mount

TENDER SIZE	16'	18'	20'
Travel Height	7'2"		
Auger Length	16'7"		
Discharge Height - MIN	7'1"		
Discharge Height - MAX	14'2"		
Auger Reach - SIDE	13'4"		
Standard Cubic Feet	569	663	711
6" Taller Cubic Feet	633	735	791

Discharge height is measured from the top of the existing truck frame.

TRAILER MOUNT



24' Side Discharge Mounted on a 45' Trailer

TENDER SIZE	20'	24'	28'	32'
Travel Height	10'8"			
Auger Length	16'7"			
Discharge Height - MIN	10'7"			
Discharge Height - MAX	17'8"			
Auger Reach - SIDE	13'4"			
Standard Cubic Feet	711	854	996	1138
6" Taller Cubic Feet	791	950	1107	1265

All Brehmer Fertilizer Tenders are built with:

EZ Slide Gate System

- Run gates full-open without clogging

LOW Center of Gravity

- Unique to Brehmer Tenders
- Increases safety, decreases rollovers

304 Stainless Steel Bin Construction and Auger Flighting

Filled-In Tarp Bow System

Individual Hopper Ladders

Reinforced Corner Gussets

Unloading Capacity of 3500-4000 lbs/min

Grease Banks

Unique Bearing Design

2" Clean-Outs

OVERHEAD DISCHARGE

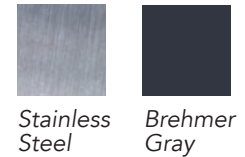
FEATURES:

- Top-Mounted Orbital Motor on the Vertical Auger
- 270° Rotation Auger System
- 10" Belly, 13" Vertical, 10" Discharge

OPTIONS:

- Split Bins
- Diesel or Wet Kit Available
- Stainless Steel Fenders

COLOR OPTIONS:



TRUCK MOUNT



NEW! TOP MOUNTED ORBITAL MOTOR ON ALL UNITS.

TENDER SIZE	16'	18'	20'
Travel Height	8'10"		
Auger Length	16'10"		
Discharge Height - MIN	7'2"		
Discharge Height - MAX	17'8"		
Auger Reach - SIDE	13'7"		
Auger Reach - REAR	14'7"		
Standard Cubic Feet	569	663	711
6" Taller Cubic Feet	633	735	791

Discharge height is measured from the top of the existing truck frame.

TRAILER MOUNT



TENDER SIZE	20'	24'	28'	32'
Travel Height	12'4"			
Auger Length	16'10"			
Discharge Height - MIN	10'8"			
Discharge Height - MAX	21'3"			
Auger Reach - SIDE	13'8"			
Auger Reach - REAR	14'7"			
Standard Cubic Feet	711	854	996	1138
6" Taller Cubic Feet	791	950	1107	1265

FIELD LOADER CONVEYORS



FL1024

Featuring 304 stainless steel undercarriage and framework, this field loader boasts a drive wheel with power steering.



Hydraulic driven and steerable drive wheel

STANDARD FEATURES:

- 20 HP Honda engine, electric start
- 24" wide crescent top belt with stainless steel lacing
- 30° Incline
- 1" bearings
- 13' 3" discharge height
- Direct hydraulic driven crowned and lagged drive pulley
- Self-aligning belt-tightening system (Patent Pending)
- 304 stainless steel undercarriage and framework
- Hydraulic driven and steerable drive wheel
- 205/75R 15" tires
- Variable belt speed
- Low profile 10" horizontal hopper
- 25'6" incline
- 4' folding hopper
- Adjustable discharge chute
- Tow hitch with 1" clevis and safety chains
- 8 gallon gas tank

OPTIONS:

- Stainless steel weather covers
- Enclosed discharge spout



FL1030

Ruggedly designed to work in any environment, the FL1030 Field Loader from Brehmer Mfg. is designed to handle your ag lime and fertilizer loading needs.



Remote controlled belt and tow hitch.



Optional hopper skirting

STANDARD FEATURES:

- Wireless remote RPM and belt on/off
- Start/stop with a fully loaded belt
- Duetz 2.9L engine, electric start
- 30" wide belt
- 25° Incline
- 2" bearings
- Direct hydraulic driven crowned drive pulley
- Self-aligning belt-tightening system (Patent Pending)
- Variable belt speed
- 10' hopper
- 13' 11" discharge height
- 12' 6" roller height
- Tow hitch with 1" clevis and safety chains (Pintle hitch, optional)
- Wireless remote hydraulic powered raise/lower hitch
- 38" max hitch height
- 44' 2" overall length
- 13' 2" travel height
- Brake and turn lights, 7 way RV plug
- 255/70 R22.5 tires
- 7,100 lbs total wt. (1,060 lbs tongue wt.)
- 30 gallon fuel tank
- 34 gallon hydraulic reservoir

OPTIONS:

- Hopper Skirting



Brehmer

825 MAIN STREET | LYONS, NEBRASKA 68038

888-687-2655

WWW.BREHMER.COM

07272023-03